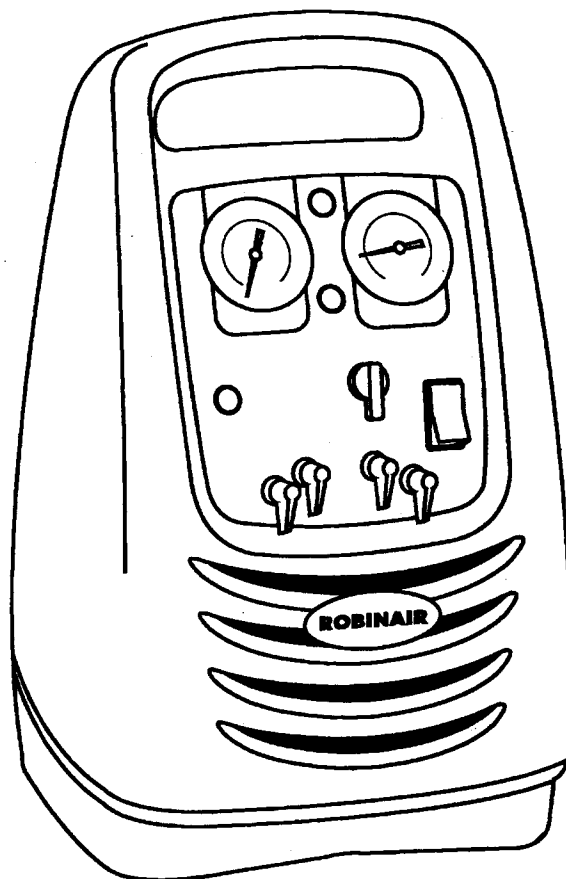


ROBINAIR

Operating Manual



Model 25200B/25202B Refrigerant Recovery Unit

(Not for use in automotive R-134a applications)

ROBINAIR

Refrigerant Recovery Unit

Model: 25200B /25202B Series

Type of Equipment: Recovery

Refrigerants: R-12, R-22, R-134a, R-401A, R-401B, R-402A,
R-402B, R-404A, R-407A, R-407B, R-407C, R-408A,
R-409A, R-410A, R-500, R-502, R-507

DESIGN PRESSURE:

High 435 psig

Low 336 psig



WARNING



PRESSURIZED TANK CONTAINS LIQUID REFRIGERANT. OVERFILLING OF THE TANK MAY CAUSE VIOLENT EXPLOSION AND POSSIBLE INJURY OR DEATH. Use only authorized refrigerant tanks. Refer to this instruction manual for tank specs. Do not recover refrigerants into a non-refillable storage container! Federal regulations require refrigerant to be transported only in containers meeting DOT spec. 4BW or DOT spec. 4BA.

CAUTION: TO REDUCE THE RISK OF INJURY, care should be taken when moving this equipment.

ALL HOSES MAY CONTAIN LIQUID REFRIGERANT UNDER PRESSURE. Contact with refrigerant may cause injury. Wear proper protective equipment, including safety goggles. Disconnect hoses with extreme caution.

HIGH VOLTAGE ELECTRICITY INSIDE PANELS. RISK OF ELECTRICAL SHOCK. Disconnect power before servicing unit. Refer to this instruction manual.

TO REDUCE THE RISK OF FIRE, avoid the use of an extension cord because the extension cord may overheat. However, if you must use an extension cord, the cord must be No. 14 AWG minimum and kept as short as possible. Do not use this equipment in the vicinity of spilled or open containers of gasoline or other flammable substances. Use this equipment in locations with mechanical ventilation that provides at least four air changes per hour or locate the equipment at least 18 inches above the floor. Make certain that all safety devices are functioning properly before operating the unit. Before operating, read and follow the instructions and warnings in this operating manual.

Use only with refrigerants R-12, R-22, R-134a, R-401A, R-401B, R-402A, R-402B, R-404A, R-407A, R-407B, R-407C, R-408A, R-409A, R-410A, R-500, R-502, R-507. This equipment is not designed for any other purpose than recovering refrigerants! Do not mix refrigerant types.

CAUTION: SHOULD BE OPERATED BY QUALIFIED PERSONNEL. Operator must be familiar with air conditioning and refrigeration systems, refrigerants and the dangers of pressurized components.

R-134a WARNINGS

Cross-contamination with other refrigerant types will cause severe damage to the A/C System and to service tools and equipment. Do not mix refrigerant types through a system or in the same container!

Avoid breathing A/C refrigerant and lubricant vapor or mist. Exposure may irritate eyes, nose and throat. If accidental system discharge occurs, ventilate work area before resuming service.

HFC-134a service equipment or vehicle A/C systems should not be pressure-tested or leak-tested with compressed air. Some mixtures of air/HFC-134a have been shown to be combustible at elevated pressures. These mixtures are potentially dangerous and may result in fire or explosion causing injury or property damage.

Additional health and safety information may be obtained from refrigerant and lubricant manufacturers.

OPERATING NOTES

At operating temperatures exceeding 120° F/49° C, wait 10 minutes between recovery jobs.

This equipment has been certified by ARI to meet EPA's minimum requirements for recovery and recycling equipment intended for use with all HCFC appliances and other high pressure appliances.

TABLE OF CONTENTS

Glossary of Terms	1
Set-Up Instructions	2
Operating Guidelines - Model 25200B	2
Set-Up Instructions - Model 25200B	2
Operating Guidelines - Model 25202B	4
Set-Up Instructions - Model 25202B	4
Operating Instructions	6
Recovery Procedure - Model 25200B	6
Recovery Procedure - Model 25202B	7
Tank-to-Tank Transfer - Model 25200B	8
HIGH PRESSURE Light - Model 25200B	8
Tank-To-Tank Transfer - Model 25202B	9
HIGH PRESSURE Light - Model 25202B	9
Self-Clearing Procedures Both Units	10
Maintenance	11
Replacement Parts - Both Units	11
Troubleshooting Tips - Both Units	12
Flow Diagram - Model 25200B	13
Wiring Diagram - Model 25200B	14
Wiring Diagram - Model 25202B	15
Limited Warranty	16

GLOSSARY OF TERMS

A/C-R	Air conditioning or refrigeration.
A/C-R System	The air conditioning or refrigeration system being serviced.
Unit	The refrigerant recovery unit.
Tank	The refillable refrigerant tank.

NOTE:

When connecting or using this unit, make sure that you are following the instructions for your particular unit. Always follow the instructions for the 25200B OR the 25202B.

Set-Up Instructions

25200B OPERATING GUIDELINES

- The voltage at the unit must be +10% of the unit's rated voltage.
- Extension cords must be a minimum of 14 AWG and kept as short as possible.
- To minimize mixing of refrigerants, the self-clearing procedure must be performed after each recovery operation.
- The low side gauge on the unit allows you to monitor system pressure and stop recovery when a deep enough vacuum has been reached. The high side gauge on the unit allows you to monitor the refillable tank pressure.
- When changing from liquid to vapor, the unit may switch back and forth several times before staying on vapor. You may notice the liquid and vapor lights switching and hear the solenoids opening and closing. This is normal and does not affect the unit or its operation.

25200B SET-UP INSTRUCTIONS

The unit comes with four 60" Enviro-Guard hoses with ball valves. Either blue hose may be used where blue hose connections are called for, and either red hose may be used for red hose connections.

CAUTION! Be sure ball valves on hoses are in the closed position before connecting them.

1. Connect the hoses as follows:

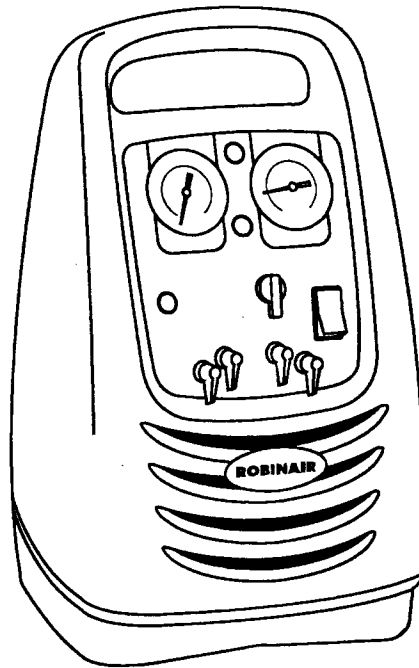
<i>Hose</i>	<i>Standard End connects to:</i>	<i>Ball Valve End connects to:</i>
Blue Hose	TANK LIQUID fitting on unit	LIQUID port on tank
Red Hose	TANK VAPOR fitting on unit	VAPOR port on tank
Blue Hose	SYSTEM VAPOR fitting on unit	SYSTEM VAPOR port
Red Hose	SYSTEM LIQUID fitting on unit	SYSTEM LIQUID port

2. Plug the unit into the proper electrical outlet. The fan starts running immediately.

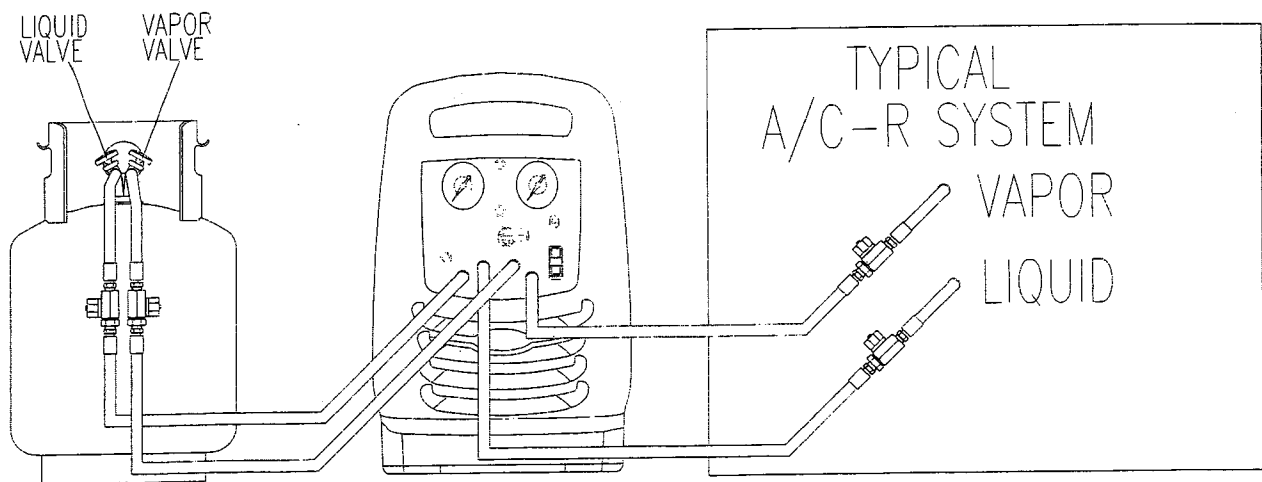
The unit is ready for operation.

Set-Up Instructions

Model 25200B



Front View of Unit



INST0723

Hose Connections

Set-Up Instructions

25202B OPERATING GUIDELINES

- The voltage at the unit must be +10% of the unit's rated voltage.
- Extension cords must be a minimum of 14 AWG and kept as short as possible.
- To minimize mixing of refrigerants, the self-clearing procedure must be performed after each recovery operation.
- The low side gauge on the unit allows you to monitor system pressure and stop recovery when a deep enough vacuum has been reached. The high side gauge on the unit allows you to monitor the refillable tank pressure.
- When changing from liquid to vapor, the unit may switch back and forth several times before staying on vapor. You may notice the liquid and vapor lights switching and hear the solenoids opening and closing. This is normal and does not affect the unit or its operation.

25202B SET-UP INSTRUCTIONS

The unit comes with four 60" Enviro-Guard hoses with ball valves. Either blue hose may be used where blue hose connections are called for, and either red hose may be used for red hose connections.

CAUTION! Be sure ball valves on hoses are in the closed position before connecting them.

1. Connect the hoses as follows:

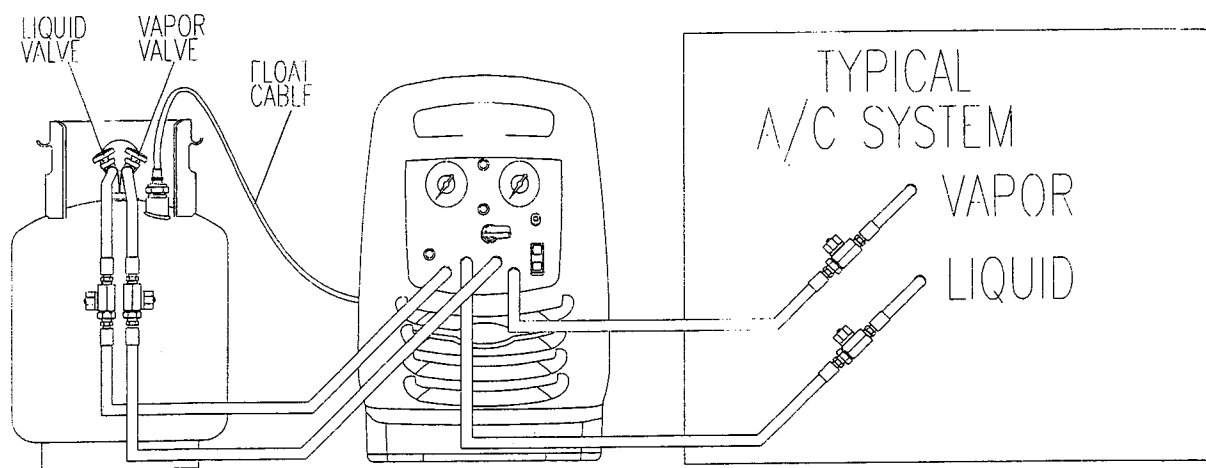
<i>Hose</i>	<i>Standard End connects to:</i>	<i>Ball Valve End connects to:</i>
Blue Hose	TANK LIQUID fitting on unit	LIQUID port on tank
Red Hose	TANK VAPOR fitting on unit	VAPOR port on tank
Blue Hose	SYSTEM VAPOR fitting on unit	SYSTEM VAPOR port
Red Hose	SYSTEM LIQUID fitting on unit	SYSTEM LIQUID port

2. Connect the float cable from the unit to a tank that has a float switch installed.
3. Plug the unit into the proper electrical outlet. The fan starts running immediately.

The unit is ready for operation.

Set-Up Instructions

Model 25202B



INST 0806

Operating Instructions

25200B RECOVERY PROCEDURE



WARNING



Always wear safety goggles when working with refrigerants. Use only authorized refillable refrigerant tanks. Disconnect hoses with extreme caution!

All hoses may contain refrigerant under pressure. Read and follow all warnings at the beginning of this manual before operating the unit.

1. Connect the hoses as described in the *Set-Up Instructions*.
2. Open the LIQUID and VAPOR valves on the recovery tank.
Open the ball valves on all four hoses.

NOTE: It is necessary to monitor the tank capacity/weight while recovering to prevent overfilling. During liquid recovery, refrigerant transfers rapidly. Monitor tank weight using the appropriate weight scale.

3. Look at the system pressure gauge on the unit to be sure there is refrigerant pressure in the system. If there is no pressure, there is no refrigerant to be recovered.

NOTE: By taking the ambient temperature and using a pressure/temperature chart, you can use this pressure to determine the type of refrigerant in the system.

4. Turn valve on the control panel to RECOVER.
5. Turn switch to RECOVER. The light on the switch illuminates and you will hear the compressor start.

A float chamber monitors refrigerant being recovered and automatically adjusts the unit to handle either liquid or vapor refrigerant. This provides for the most efficient recovery. The amber lights on the control panel indicate the state (LIQUID or VAPOR) of the refrigerant currently entering the unit.

6. The blue gauge labeled SYSTEM PRESSURE shows the current system pressure throughout the recovery process. When the system pressure reaches an adequate vacuum level, turn the RECOVERY switch to OFF.

The recovery process is complete, but the unit must be cleared before disconnecting all hoses (see *Self-Clearing Procedure*).

TANK CAPACITY CHART

Refrigerants	30 lb. Tank	50 lb. Tank
R-12	22 lbs.	40 lbs.
R-22	22 lbs.	40 lbs.
R-134a	22 lbs.	41 lbs.
R-407C	21 lbs.	39 lbs.
R-410A	19 lbs.	36 lbs.

25202B RECOVERY PROCEDURE



WARNING



Always wear safety goggles when working with refrigerants. Use only authorized refillable refrigerant tanks. Disconnect hoses with extreme caution!

All hoses may contain refrigerant under pressure. Read and follow all warnings at the beginning of this manual before operating the unit.

1. Connect the hoses and float cable as described in the *Set-Up Instructions*.
2. Open the LIQUID and VAPOR valves on the recovery tank.
Open the ball valves on all four hoses.

NOTE: It is necessary to monitor the tank capacity/weight while recovering to prevent overfilling. During liquid recovery, refrigerant transfers rapidly. Monitor tank weight using the appropriate weight scale.

3. Look at the system pressure gauge on the unit to be sure there is refrigerant pressure in the system. If there is no pressure, there is no refrigerant to be recovered.

NOTE: By taking the ambient temperature and using a pressure/temperature chart, you can use this pressure to determine the type of refrigerant in the system.

4. Turn valve on the control panel to RECOVER.
5. Turn switch to RECOVER. The light on the switch illuminates and you will hear the compressor start.

A float chamber monitors refrigerant being recovered and automatically adjusts the unit to handle either liquid or vapor refrigerant. This provides for the most efficient recovery. The amber lights on the control panel indicate the state (LIQUID or VAPOR) of the refrigerant currently entering the unit.

6. The blue gauge labeled SYSTEM PRESSURE shows the current system pressure throughout the recovery process. When the system pressure reaches an adequate vacuum level, turn the RECOVERY switch to OFF.

The recovery process is complete, but the unit must be cleared before disconnecting all hoses (see *Self-Clearing Procedure*).

TANK CAPACITY CHART

Refrigerants	30 lb. Tank	50 lb. Tank
R-12	22 lbs.	40 lbs.
R-22	22 lbs.	40 lbs.
R-134a	22 lbs.	41 lbs.
R-407C	21 lbs.	39 lbs.
R-410A	19 lbs.	36 lbs.

Operating Instructions



WARNING



Be sure the refrigerant level in the tank does not exceed 80% of the tank volume. Failure to monitor the level could result in excessive hydrostatic pressures, causing physical injury or death.

25200B TANK-TO-TANK TRANSFER

If you are recovering refrigerant from one refillable tank into another, the color of the hoses used for SYSTEM LIQUID and SYSTEM VAPOR may not match the color of the liquid and vapor valves on the tank you are pulling refrigerant from. Be sure the hose for SYSTEM LIQUID is connected to the liquid valve of the tank and the hose for SYSTEM VAPOR is connected to the vapor valve of the tank.

1. Connect the hoses as follows:

Standard End connects to:

TANK LIQUID fitting on unit

TANK VAPOR fitting on unit

SYSTEM VAPOR fitting on unit

SYSTEM LIQUID fitting on unit

Ball Valve End connects to:

LIQUID port on tank refrigerant is being transferred into

VAPOR port on tank refrigerant is being transferred into

VAPOR port on tank refrigerant is being transferred from

LIQUID port on tank refrigerant is being transferred from

2. Follow Steps 1 through 6 in the *Recovery Procedure* on the previous page.

NOTE: Monitor tank weight.

HIGH PRESSURE (25200B)

If, during the recovery or self-clearing process, the HIGH PRESSURE light comes on, make sure all appropriate valves are open. If the valves are open and the light is still on, there is an excessive amount of air or the tank is full. Follow these steps:

1. Press the COMPRESSOR switch to OFF.
2. Close both valves on the refillable tank and close both valves on the red and blue hoses connected to the tank.
3. Disconnect the red hose and the blue hose from the refillable tank.
4. Replace this tank with an empty refillable tank.
5. Reconnect the hoses as described in the *Set-Up Instructions*. Then follow the steps in either the *Recovery Procedure* or the *Self-Clearing Procedure*.

If, after completing the above steps, either light is still on, call the Technical Support Line at (800) 822-5561.



WARNING



Be sure the refrigerant level in the tank does not exceed 80% of the tank volume. Failure to monitor the level could result in excessive hydrostatic pressures, causing physical injury or death.

25202B TANK-TO-TANK TRANSFER

If you are recovering refrigerant from one refillable tank into another, the color of the hoses used for SYSTEM LIQUID and SYSTEM VAPOR may not match the color of the liquid and vapor valves on the tank you are pulling refrigerant from. Be sure the hose for SYSTEM LIQUID is connected to the liquid valve of the tank and the hose for SYSTEM VAPOR is connected to the vapor valve of the tank.

1. Connect the hoses as follows:

Standard End connects to:

TANK LIQUID fitting on unit

TANK VAPOR fitting on unit

SYSTEM VAPOR fitting on unit

SYSTEM LIQUID fitting on unit

Ball Valve End connects to:

LIQUID port on tank refrigerant
is being transferred into

VAPOR port on tank refrigerant
is being transferred into

VAPOR port on tank refrigerant
is being transferred from

LIQUID port on tank refrigerant
is being transferred from

2. Follow Steps 1 through 6 in the *Recovery Procedure* on the previous page.

NOTE: Monitor tank weight.

HIGH PRESSURE (25202B)

If, during the recovery or self-clearing process, the HIGH PRESSURE light comes on, make sure all appropriate valves are open. If the valves are open and the light is still on, there is an excessive amount of air or the tank is full. Follow these steps:

1. Press the COMPRESSOR switch to OFF.
2. Close both valves on the refillable tank and close both valves on the red and blue hoses connected to the tank.
3. Disconnect the red hose and the blue hose, along with the float cable, from the refillable tank.
4. Replace this tank with an empty refillable tank.
5. Reconnect the hoses and float cable as described in the *Set-Up Instructions*. Then follow the steps in either the *Recovery Procedure* or the *Self-Clearing Procedure*.

If, after completing the above steps, either light is still on, call the Technical Support Line at (800) 822-5561.

SELF-CLEARING PROCEDURE (BOTH UNITS)

CAUTION! Do not mix refrigerant types. Always perform the self-clearing procedure after each recovery. Beginning each job with a "clean" unit will help eliminate mixing of different refrigerant types.

1. Close the ball valves on the red and blue hoses connected to the A/C-R system. Disconnect these hoses from the system's access ports.
2. Close the blue LIQUID valve on the tank and the ball valve on the blue TANK LIQUID hose. Disconnect the TANK LIQUID hose from the tank.
3. Check to be sure the red TANK VAPOR hose is still connected to the red VAPOR fitting on the tank. Both the tank's red VAPOR valve and the ball valve on the red TANK VAPOR hose should be open.
4. Turn the valve on the control panel to SELF-CLEAR.
5. Press the switch to SELF-CLEAR. You will hear the compressor start and the switch will illuminate.
6. Let the compressor run until the system pressure gauge reaches the appropriate vacuum level. The System Pressure gauge will return to VACUUM. Press the COMPRESSOR switch to OFF. Unplug the unit from the electrical source.
7. Close the red VAPOR valve on the tank and the ball valve on the red TANK VAPOR hose. Disconnect the TANK VAPOR hose from the tank.



WARNING



Disconnect hoses with extreme caution! All hoses may contain refrigerant under pressure.

8. While the hoses are still connected to the unit, *slowly* open the ball valve on each hose to relieve any pressure in the hose. Close the ball valves, then disconnect the hoses from the unit.

Your unit has been designed for minimal maintenance. The compressor should be evaluated for wear after 2,500 hours of use. Call Robinair's Technical Support Line, (800) 822-5561, for the location of an authorized Robinair service center near you.

REPLACEMENT PARTS (BOTH UNITS)

	115v	230v
Ball Valve	RA19664	RA19664
System Pressure Gauge	19666	19705
Tank Pressure Gauge	19667	19708
Switch—Compressor	19670	19704
High Pressure Cut-Out	RA19720	RA19720
Ball Valve Hose—60" Red	65360	65360
Ball Valve Hose—60" Blue	65260	65260
Compressor	19652	19706
Indicator Light, Red	RA17106	RA19349
Indicator Light, Amber	RA17107	RA19351
Fan	RA17416	RA17516
Float Chamber	19685	19685
Relay Board	19662	19703
Case Bottom	19663	19663
Case Back	19665	19665
Case Front	19667	19667
Float Cable & Relay	19497	19498

CAUTION!

Clean the shroud and/or base with standard soap and water only. Industrial solvents found in most cleaners and degreasers can cause the plastic to crystallize and become brittle.

Troubleshooting Tips

Compressor does not start

Problem: Compressor circuit breaker has tripped

Solution: *Depress the circuit breaker switch*

Problem: HIGH PRESSURE light is on

Solution: *The high side pressure switch has tripped; Verify that the tank and hose ball valves are open. Check tank and verify that it is not full*

Problem: COMPRESSOR switch is not on

Solution: *Press the COMPRESSOR switch to ON*

Compressor runs but does not move refrigerant

Problem: Valve is not in the RECOVER position

Solution: *Turn Valve to RECOVER*

Problem: The ball valves on the hoses are not open

Solution: *Open the ball valves*

Problem: The tank valves are not open

Solution: *Open the valves*

During recovery, unit shuts off on high pressure

Problem: The refillable tank valves are not open

Solution: *Open the tank valves*

Problem: Valves on hoses are shut

Solution: *Open valves*

Unit will not pull down to appropriate vacuum level

Problem: There is a leak in the A/C system

Solution: *Fix the leak*

Problem: Trapped pockets of refrigerant

Solution: *Allow system to stabilize then heat with a heat gun*

TANK FULL Light is On

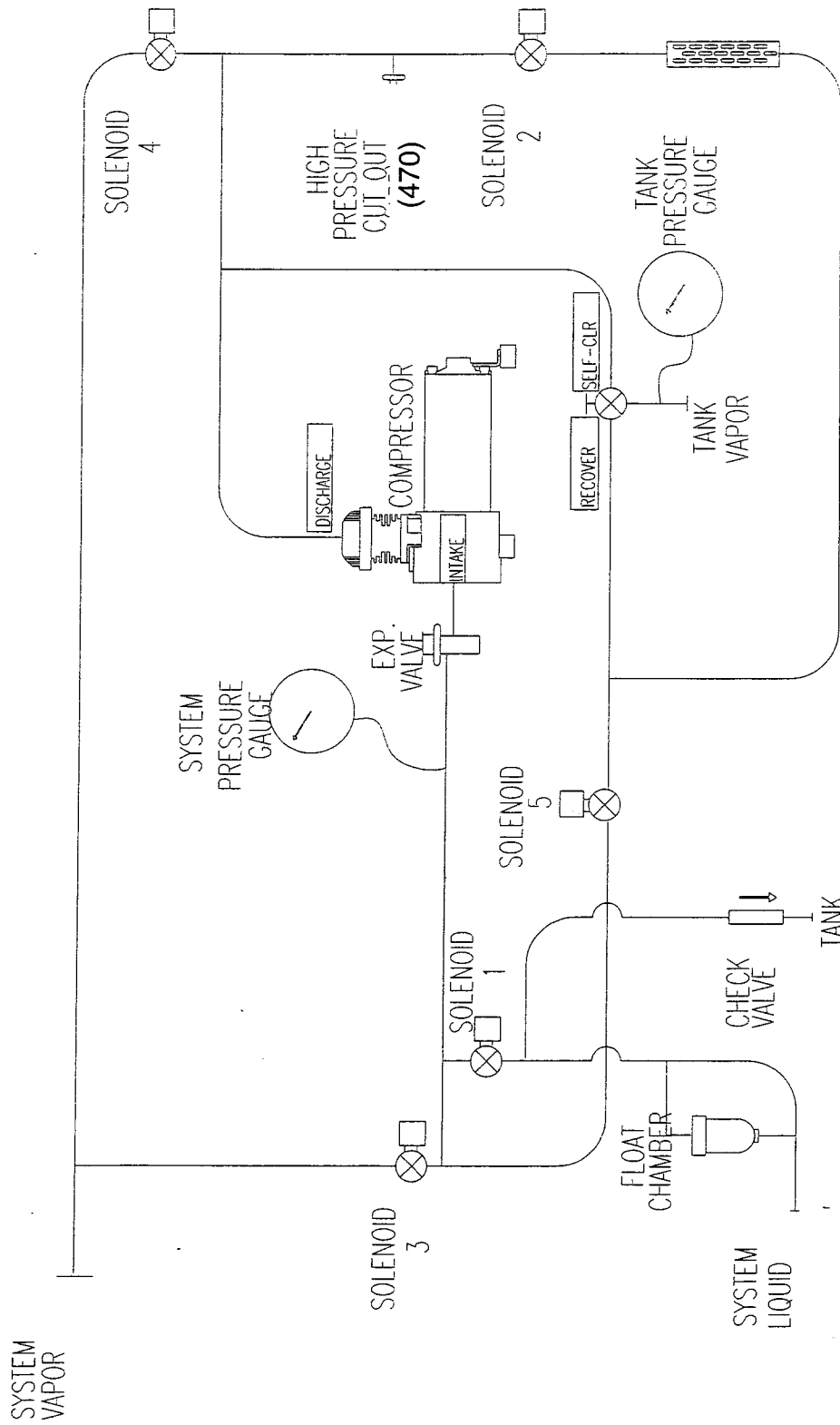
Problem: Tank float cable is disconnected at front _____

Solution: *Connect the float cable to the tank.*

Problem: Recovery tank is full.

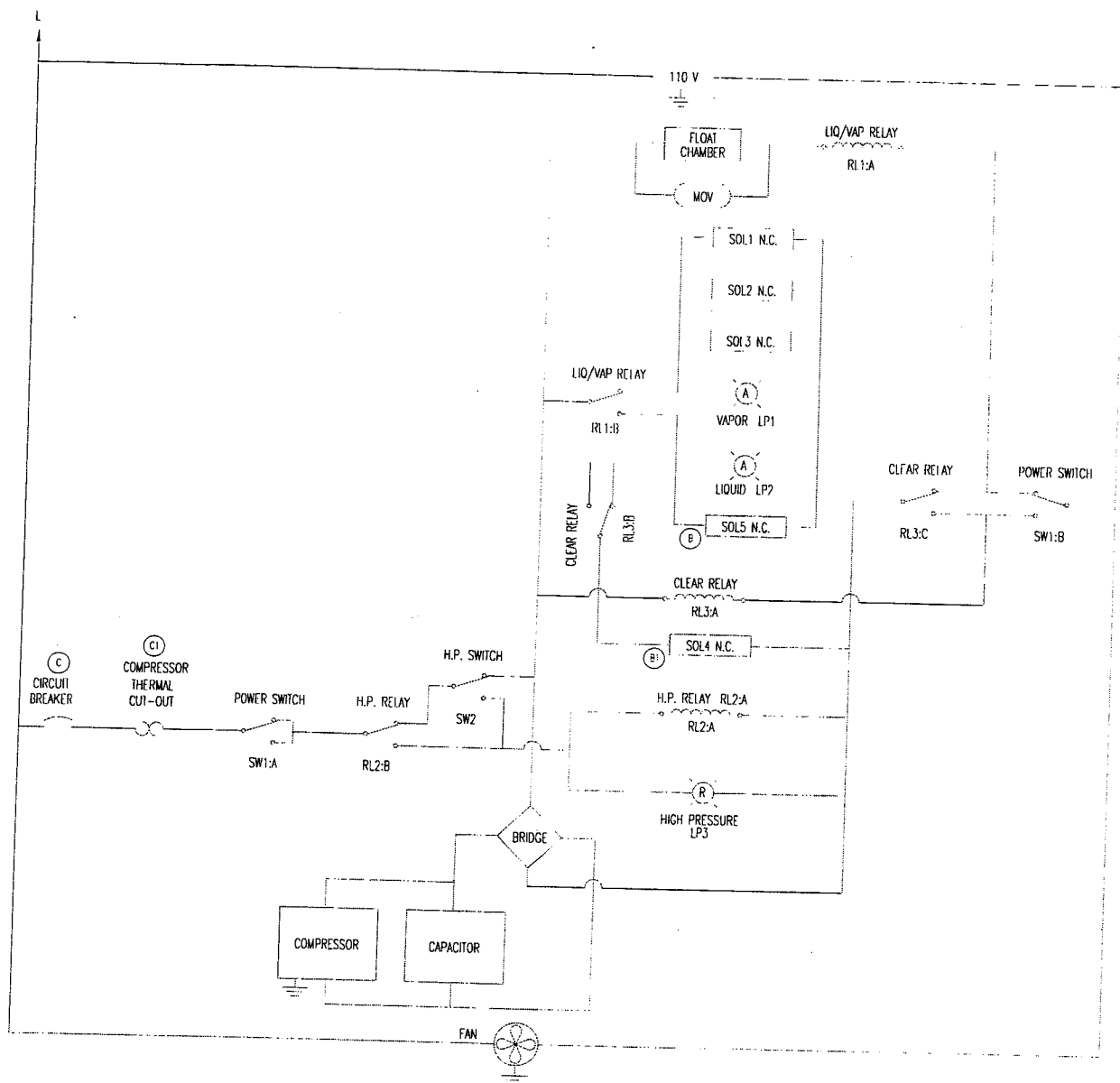
Solution: *Change the recovery tank.*

MODEL 25200B



INST0722

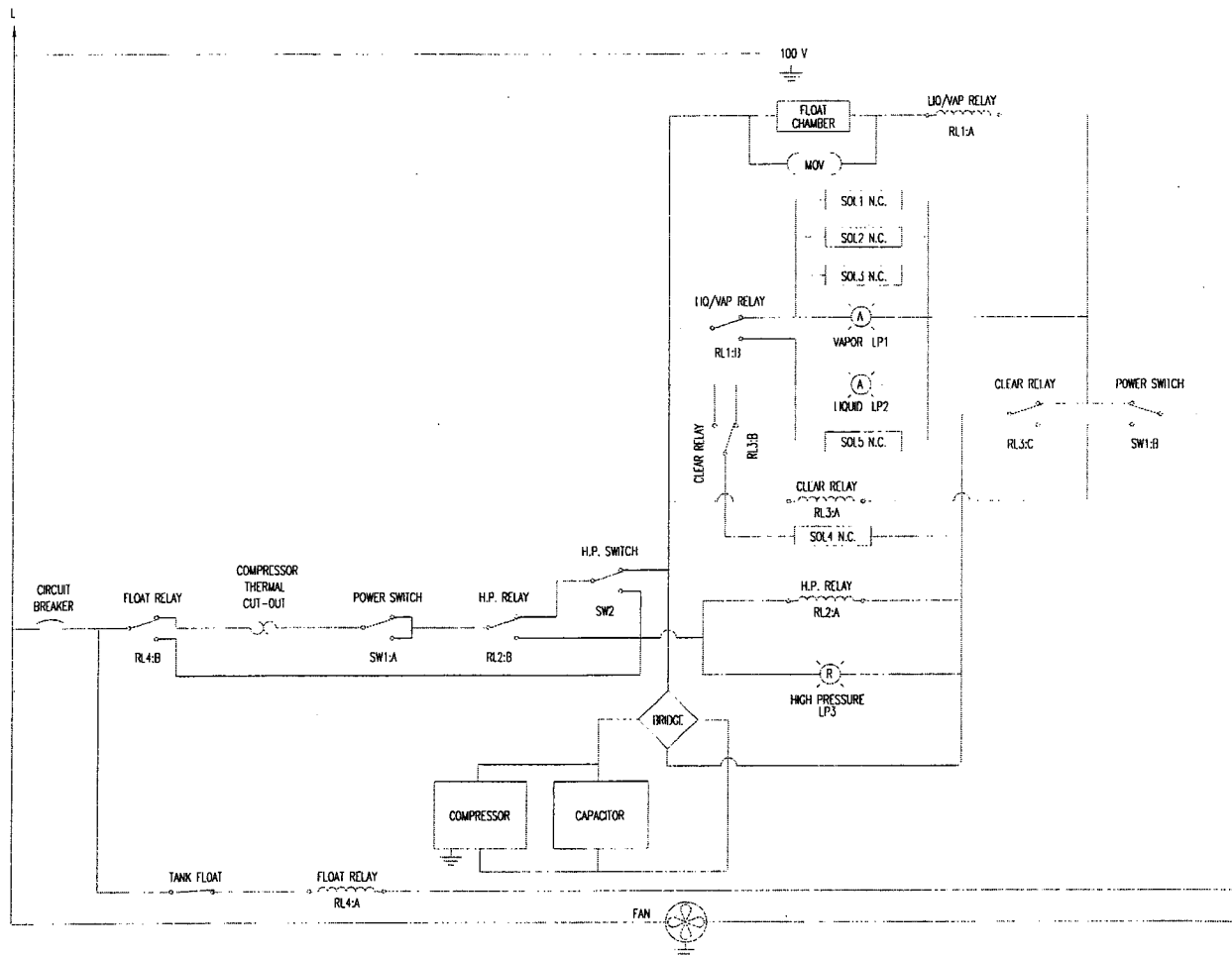
MODEL 25200B



INST0721

Wiring Diagram

MODEL 25202B



INST0807

Limited Warranty

This product is warranted to be free from defects in workmanship, materials, and components for a period of one year from date of purchase. All parts and labor required to repair defective products covered under the warranty will be at no charge.

The following restrictions apply:

1. The limited warranty applies to the original purchaser only.
2. The warranty applies to the product in normal usage situations only, as described in this operating manual. The product must also be serviced and maintained as specified.
3. If the product fails, it will be repaired or replaced at the option of the manufacturer.
4. Warranty service is provided by our network of authorized service centers. Call the toll-free Technical Support Line, (800) 822-5561, for service authorization and the location of the nearest service center. **Do not** ship or deliver units to a service center without authorization. **Do not** ship units to the factory.
5. Warranty service claims are subject to factory inspection for product defect(s). The factory or service center personnel are the sole determiners of warranty coverage.
6. The manufacturer shall not be responsible for any additional costs associated with a product failure including, but not limited to, loss of work time, loss of refrigerant, and unauthorized shipping and/or labor charges.
7. All warranty service claims must be made within the specified warranty period. Proof-of-purchase date must be supplied to the manufacturer.
8. Use of this recovery equipment with unauthorized refrigerants will void our warranty. Authorized refrigerants are listed on the equipment or are available through our Technical Service Department.

This Limited Warranty does not apply if:

- The product, or product part, is broken by accident.
- The product is misused, tampered with or modified.
- The product is used for recovering any substance other than the specified refrigerant type.

Notes

CONVERSION TABLE

OZ. LBS.

0.5	0.03
1.0	0.06
1.5	0.09
2.0	0.13
2.5	0.16
3.0	0.19
3.5	0.22
4.0	0.25
4.5	0.28
5.0	0.31
5.5	0.34
6.0	0.38
6.5	0.41
7.0	0.44
7.5	0.47
8.0	0.50
8.5	0.53
9.0	0.56
9.5	0.59
10.0	0.63
10.5	0.69
11.0	0.69
11.5	0.72
12.0	0.75
12.5	0.78
13.0	0.81
13.5	0.84
14.0	0.88
14.5	0.91
15.0	0.94
15.5	0.97
16.0	1.16

Visit our web site at
www.robinair.com

or

call our toll-free

Technical Support Line

800-822-5561

in the continental U.S. and Canada.



In all other locations, contact your local distributor. To help us serve you better, please be prepared to provide the model number, serial number, and date of purchase.

To validate your warranty, you must complete the warranty card attached to your unit and return it within ten days from date of purchase.

• NATIONWIDE NETWORK OF AUTHORIZED SERVICE CENTERS

If your unit needs repairs or replacement parts, you should contact the service center in your area. For help in locating a service center, call the toll free technical support line.

Due to ongoing product improvements,
we reserve the right to change design,
specifications and materials without notice.

SPX

ROBINAIR

*SPX Corporation
1224 Robinair Way, Box 193
Montpelier OH 43543-0193 USA
Phone 419-485-5561
Fax 419-485-8300
Web site: www.robinair.com*